

precisaw®

for highest precision, working convenience
and efficiency



World first

precisaw®



The precision circular saw "precisaw®" was developed by mechanical engineers, precision mechanics engineers and professional model makers.

Using proven materials, solid components, cutting-edge measurement technology and ergonomically positioned controls, we have created a precision circular saw with unprecedented qualities.



The "precisaw®" is equipped with two independent measuring computers. Thanks to the accurate measurement of the X and Z axes, almost no measuring and marking of the workpiece is necessary:



You may save two steps or more, thus achieving time savings of up to 30% over conventional saws. The precision on the workpiece is 0.1mm minimum: specialty cuts and grooves of up to 0.4mm can easily be implemented.

This machine performs almost trackless cuts, runs virtually vibration-free and at a low noise level. These combined features ensure highly convenient operation.



The circular saw blade can easily be replaced in only a few steps.



Connection for foot switch and controlled suction.

The precision circular saw "precisaw®" is available in various colors.



The "precisaw ®" sets new standards in the professional production of ...

Applications



architecture and design models



positive and negative industry models



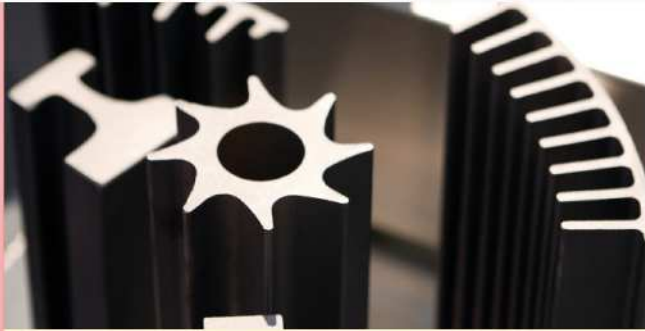
toy production



art and design



advertising displays



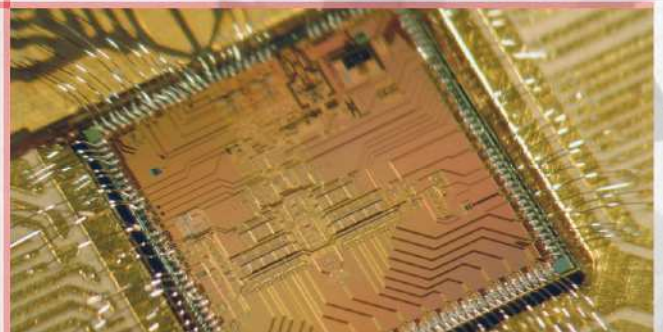
technical model / mold making



remote control models of all kinds



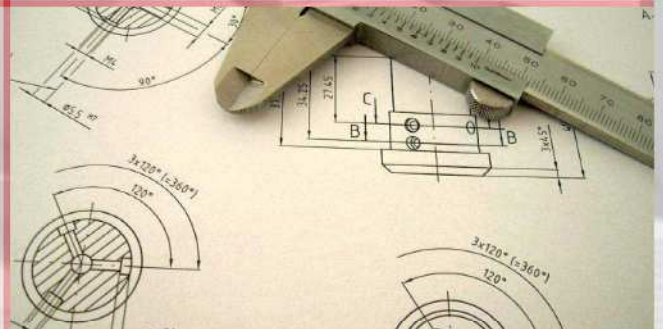
musical instruments



electronics



restoration



prototypes / small series

... and many other applications



Specifications:

- Table size: 480 x 400mm
- Weight: 60.5 kg
- Ø Blade socket: 30mm
- Line voltage: 230 V
- SIKO measuring computer X and Z axis
- Fine adjustment 40mm
- Blade adjustment 7mm
- Mitre gauge with digital angle display (optional)
- Connection for foot switch and controlled suction
- 100% Swiss Made



precisaw®



modellbaumaschinen.ch

Daniele Ciampi
Alpenstrasse 6
6210 Sursee
+41 41 921 93 43
info@plastico.ch
www.plastico.ch

precisa